

### STANDARD COMPONENTS INCLUDE:

Boom, boom rest, boom hoist cylinder, 2-speed main winch, single speed auxiliary winch, rotation resistant load line and 5 ton (4,5 mt) overhaul ball, LMI & ATB protection systems, subframe with integrated out-down outriggers, a-frame link pedestal outriggers, single rear stabilizer, 3-section pump and hydraulic reservoir.

### HYDRAULICS

- 8-Bolt direct mounted PTO with SAE B-B or B output (factory mounted units only)
- 3-Section gear pump, SAE B-B input (standard)

Pump Section	2000 RPM	2000 RPM
Shaft End Pump:	32.4 GPM @ 100 PSI	123 LPM @ 100 PSI
Center Pump:	20.6 GPM @ 100 PSI	78 LPM @ 100 PSI
Cover End Pump:	10 GPM @ 100 PSI	38 LPM @ 100 PSI

- Hydraulic reservoir – 115 gallon (435 liter) capacity

### WARNING SYSTEMS

- LMI with display and crane function shut-offs for overload protection with internal boom length sensor cable
- Wireless Anti-two block system
- Back-up alarm

### OPTIONS

- LMI with wired ATB system
- Hycas with Wired ATB system
- Hycas with Wireless ATB system
- Removable aluminum outrigger floats
- 18' Flatbed – steel
- 18' (5,5 m) Flatbed – wood
- 18' (5,5 m) Flatbed – Heavy Hauler, 3/16" (4,7 mm) steel
- 24" (609 mm) Bulkhead
- Hydraulic oil cooler
- Three section vane pump, SAE B input
- Toolboxes
  - 24" L x 20" W x 18" H (610 mm x 508 mm x 457 mm)
  - 48" L x 18" W x 18" H (1220 mm x 457 mm x 457 mm)
- Wire Rope type 6 x 25 EIPS IWRC
- Load block - 1 & 3 sheave options
- 4-Function radio remote crane control system

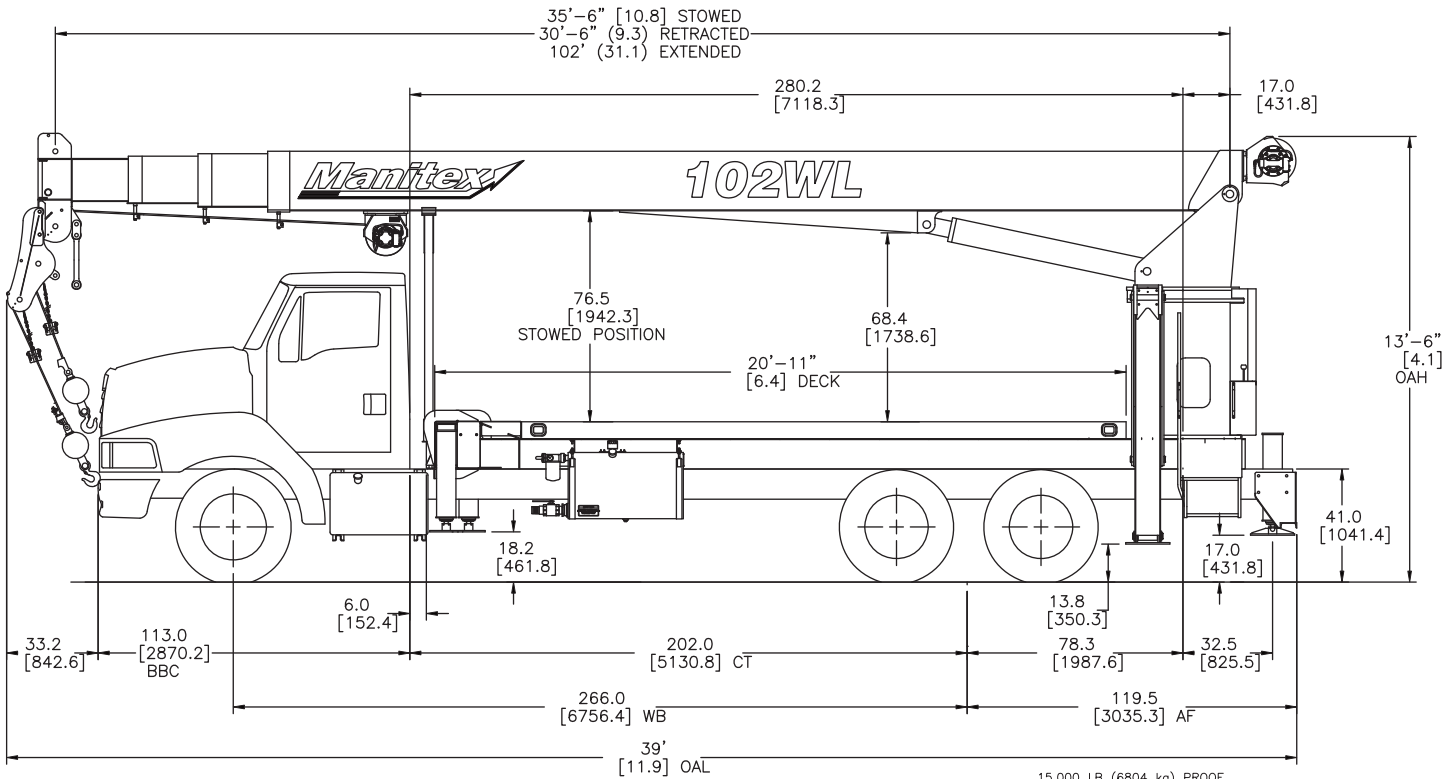
### BOOM

- 30 Ton (27,2 mt) capacity @ 5' (1,5 m) radius
- 4-Section 102' (31,1 m) proportional boom
- 3 Sheave quick reeve boom point
- 1-Sheave auxiliary head & roller guides for wireline rigging

### HOIST

- Maximum theoretical bottom-layer line pull for main winch is 11,500 lbs (5,216 kg)
- Maximum theoretical bottom-layer line pull for auxiliary winch is 4,000 lbs (1,814 kg)
- Wire Rope (Main) – 335' (102,11 m) of 9/16" (14,3 mm) diameter rotation resistant type
- Wire Rope (Aux) – 270' (82,3 m) of 3/8" (9,5 mm) diameter rotation resistant type

*In order to ensure continuous improvement, Manitex reserves the right to change design and specifications without notice.*



15,000 LB (6804 kg) PROOF LOAD TEST ON 102 FT BOOM  
10,500 LB (4763 kg) RATED CAPACITY

A PROOF LOAD IS A ONE-TIME TEST CONDUCTED AT LOADS CONSIDERABLY HIGHER THAN RATED CAPACITIES UNDER CLOSELY CONTROLLED CONDITIONS ON A NEW OR LIKE NEW UNIT. THE PROOF TEST ASSUMES THE LOAD IS FIXED AT THE WELLHEAD.

CHASSIS DATA	102WL LMI	102WL HYCAS
Wheelbase (WB)	266" 6 756 mm	266" 6 756 mm
Cab to Tandem (CT)	202" 5 131 mm	202" 5 131 mm
Cab to End of Frame	324" 8 230mm	324" 8 230mm
Frame Section Modulus	30 in3 110,000 psi 758 422 kPa	30 in3 110,000 psi 758 422 kPa
Front Axle Gross Weight Rating	18,000 lb 8 165 kg	18,000 lb 8 165 kg
Rear Axle Gross Weight Rating	40,000 lb 18 144 kg	40,000 lb 18 144 kg
Minimum Truck Axle Weight - Front*	8,450 lb 3 833 kg	8,900 lb 4 037 kg
Minimum Truck Axle Weight - Back*	8,150 lb 3 697 kg	8,100 lb 3 674 kg
Nominal Frame Width	34" 864 mm	34" 864 mm

\*Minimum chassis weight is required to meet 85% stability requirements. Chassis data is general-not for engineering. Some dimensions depend on truck selection.

MAXIMUM TIP HEIGHT	102WL
Configuration	Boom 30' 6" 9,3 m
Extended Boom	158' 9" 48,4 m

WEIGHTS	102WL
Total Crane - Standard	25,586 lb 11 606 kg
18' Flatbed	1,720 lb 780 kg
18' Heavy Duty Flatbed	2,500 lb 1 134 kg

