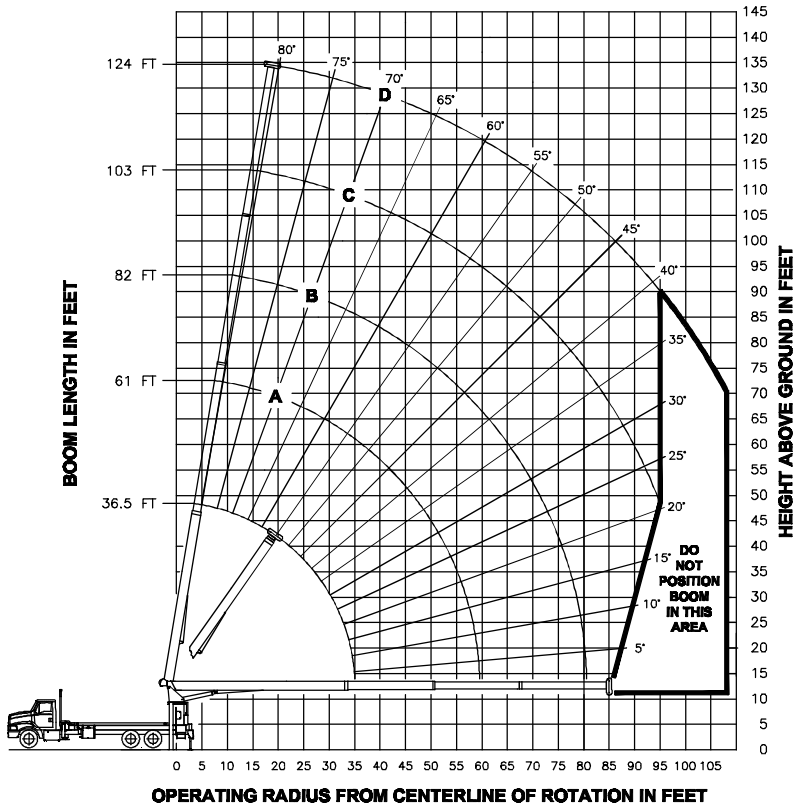


RANGE DIAGRAM



LMI OPERATING CODES

SETTING	CRANE CONFIGURATION	SETTING	CRANE WITH PERSONNEL LIFTING PLATFORM
#1---	MAIN BOOM	#5---	PERSONNEL LIFTING PLATFORM ON MAIN BOOM

ALLOWABLE LINE PULL

1 PART	2 PART	3 PART	4 PART	5 PART	6 PART
8500 LBS	17000 LBS	25500 LBS	34000 LBS	42500 LBS	50000 LBS
7400 LBS	14800 LBS	22200 LBS	29600 LBS	37000 LBS	44400 LBS

WARNING

ANTI-TWO-BLOCK SYSTEM MUST BE IN GOOD OPERATING CONDITION BEFORE OPERATING CRANE.

REFER TO THE OWNER'S MANUAL.

KEEP AT LEAST 3 WRAPS OF LOAD LINE ON THE DRUM AT ALL TIMES.

9/16" 6X25 IWRC (3.5:1 SF) - 29750 LBS MIN BREAKING STRENGTH
 9/16" ROT RESISTANT (5.0:1 SF) - 37000 LBS MIN BREAKING STRENGTH

DEDUCTIONS FROM RATED LOADS FOR LOAD HANDLING DEVICES SUPPLIED BY MANITEX

AUXILIARY BLOCK	50 LBS
WIRELINE SHEAVE HEAD	100 LBS
AUXILIARY WINCH	200 LBS
OVERHAUL BALL	SEE OVERHAUL BALL MFR. NAMEPLATE
LOAD BLOCK	SEE BLOCK MFR. NAMEPLATE
HOSE REEL	140 LBS

LOAD RATINGS IN LBS WITH ALL OUTRIGGERS AND STABILIZERS EXTENDED AND THE CRANE LEVEL

OPERATING RADIUS FT	LMI CODE #1													
	LOADED BOOM ANGLE		BOOM LENGTH AND MARKER		BASE				1ST		2ND		3RD	
	36.5 FT	61 FT	82 FT	103 FT	124 FT	A	B	C	D	A	B	C	D	
6	81	50000												
8	77	37820												
10	74	31640												
12	71	27260	79	22200										
15	66	22630	77	20320										
20	57	17650	72	15530	78	14600								
25	46	14340	67	12510	74	11620	79	10500						
30	33	11410	61	10410	70	9570	76	9020	79	6500				
35	4	7590	56	8840	66	8060	73	7540	77	6100				
40			50	7600	62	6900	70	6400	75	5800				
45			43	6280	58	5970	67	5500	72	5150				
50			35	5190	54	5200	63	4760	70	4430				
55			25	4170	49	4380	60	4150	67	3830				
60					44	3540	57	3620	64	3320				
65					39	2860	53	2970	62	2880				
70					32	2290	49	2400	59	2460				
75					24	1800	45	1920	56	1980				
80					9	1350	41	1500	53	1570				
85							36	1150	50	1210				
90								30	830	46	900			
95								24	560	43	630			

WARNING

- THE OPERATOR MUST READ AND UNDERSTAND THE OWNER'S MANUAL BEFORE OPERATING THIS CRANE.
- POSITIONING OR OPERATION OF CRANE BEYOND AREAS SHOWN ON THIS CHART IS NOT INTENDED OR APPROVED EXCEPT WHERE SPECIFIED IN OWNER'S MANUAL.
- LOADED BOOM ANGLES AT SPECIFIED BOOM LENGTHS GIVE ONLY AN APPROXIMATION OF THE OPERATING RADIUS. THE BOOM ANGLE BEFORE LOADING SHOULD BE GREATER TO ACCOUNT FOR DEFLECTIONS. DO NOT EXCEED THE OPERATING RADIUS FOR RATED LOADS.
- FOR BOOM LENGTHS NOT SHOWN, USE RATING OF NEXT SHORTER OR LONGER BOOM LENGTH, WHICHEVER IS LESS. FOR RADI NOT SHOWN, USE RATING OF NEXT LONGER RADIUS.
- CRANE LOAD RATINGS ON OUTRIGGERS ARE BASED ON FREELY SUSPENDED LOADS WITH THE MACHINE LEVELED AND STANDING ON A FIRM UNIFORM SUPPORTING SURFACE. NO ATTEMPT SHALL BE MADE TO MOVE A LOAD HORIZONTALLY ON THE GROUND IN ANY DIRECTION.
- PRACTICAL WORKING LOADS DEPEND ON SUPPORTING SURFACE, WIND, AND OTHER FACTORS AFFECTING STABILITY SUCH AS HAZARDOUS SURROUNDINGS, EXPERIENCE OF PERSONNEL, AND PROPER HANDLING, ALL OF WHICH MUST BE TAKEN INTO ACCOUNT BY THE OPERATOR.
- THE MAXIMUM LOAD WHICH MAY BE TELESCOPED IS LIMITED BY HYDRAULIC PRESSURE, BOOM ANGLE, AND BOOM LUBRICATION. IT IS SAFE TO ATTEMPT TO TELESCOPE ANY LOAD WITHIN THE LIMITS OF THE LOAD RATING CHART. BOOM MUST BE FULLY RETRACTED AGAINST BOOM STOPS AT ALL TIMES WHEN LIFTING MINIMUM BOOM LENGTH CAPACITY LOADS.

INFORMATION

- DEDUCTIONS MUST BE MADE FROM RATED LOADS FOR STOWED JIB, OPTIONAL ATTACHMENTS, HOOKS, AND LOAD-BLOCKS (SEE DEDUCTION CHART). WEIGHTS OF SLINGS AND ALL OTHER LOAD HANDLING DEVICES SHALL BE CONSIDERED A PART OF THE LOAD.
- CRANE LOAD RATINGS WITH OUTRIGGERS ARE BASED ON OUTRIGGERS AND STABILIZERS EXTENDED AND SET WITH MACHINE LEVELED.
- LOAD RATINGS ABOVE THE HEAVY LINE ARE STRUCTURALLY LIMITED CAPACITIES. LOAD RATINGS BELOW THE HEAVY LINE ARE STABILITY LIMITED CAPACITIES AND DO NOT EXCEED 85% OF TIPPING.

DEFINITIONS

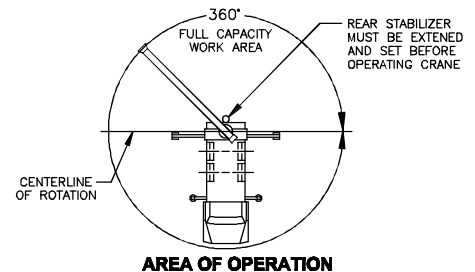
- OPERATING RADIUS IS THE HORIZONTAL DISTANCE FROM THE AXIS OF ROTATION TO THE CENTER OF THE VERTICAL HOIST LINE OR TACKLE WITH LOAD APPLIED.
- LOADED BOOM ANGLE AS SHOWN IN THE COLUMN HEADED BY \angle IS THE INCLUDED ANGLE BETWEEN THE HORIZONTAL AND LONGITUDINAL AXES OF THE BOOM BASE AFTER LIFTING RATED LOAD AT RATED RADIUS.



MODEL 124WL

CRANE MEETS ANSI B30.5 REQUIREMENTS

7300096-009 NR



AREA OF OPERATION